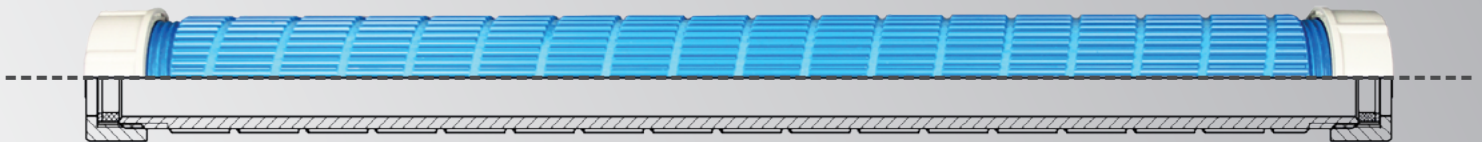




Wall Ducts.



■ made
■ in
■ Germany

B

**THROUGH
THE
WALL.**

Wall Ducts - B

Safe protection for cables and pipelines.



BEULCO wall ducts ensure reliable sealings between supply or disposal conduits and the protection pipes of the wall ducts. The wall ducts are leakproofed against water, pressing ground water and straying gas.

Lengths:

- Standard length 450 mm (wall thickness 400 mm)
Special lengths from 150 up to 2000 mm
- More lengths on request

Material:

- Plastic
- Steel

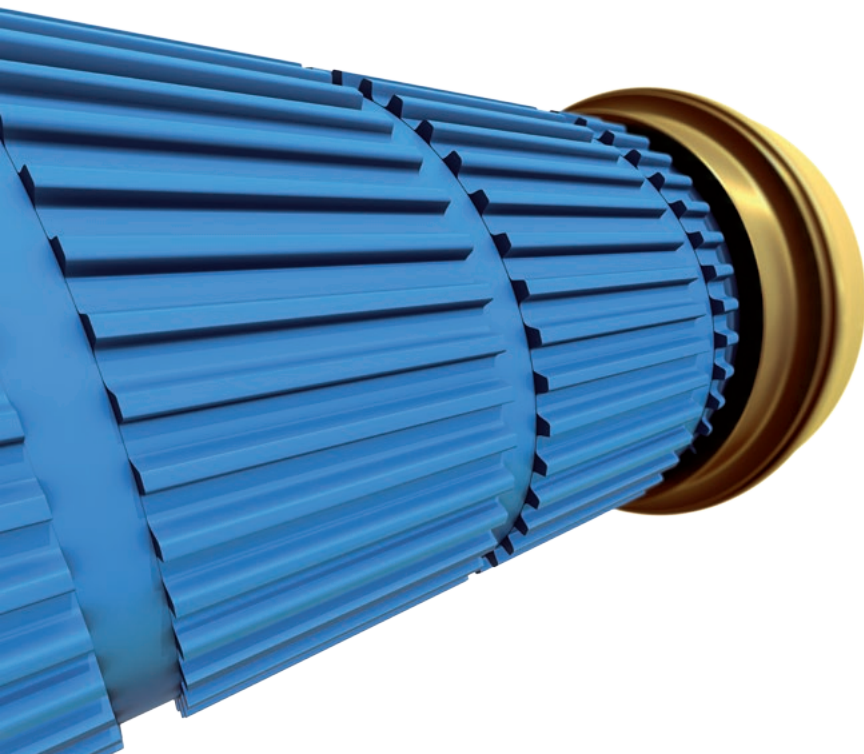
Suitable for:

- Pipelines (water)
- Drinking water
- Cables

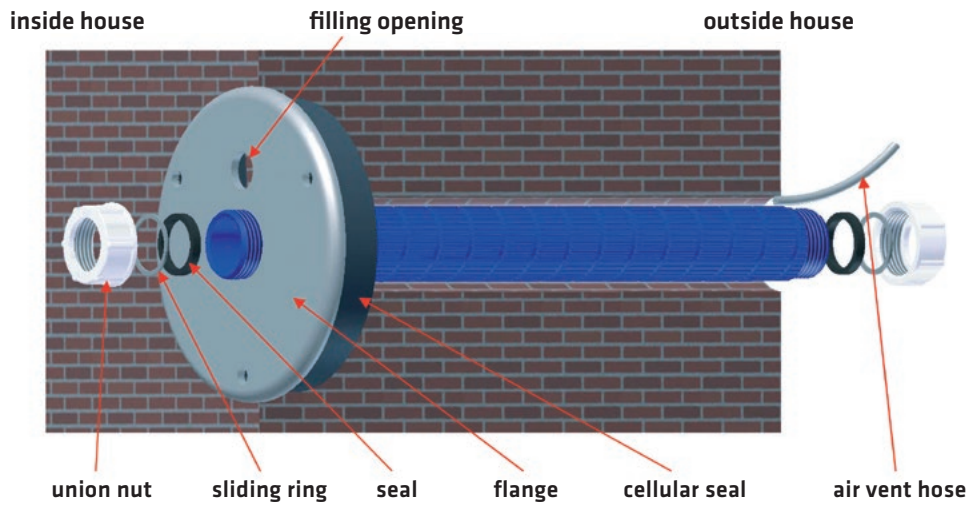
Variations:

- Rigid wall ducts
- Rigid wall ducts with connector
- Rigid wall ducts with elbow connector
- Flexible wall ducts (connection set)

- dimensionally stable material with a groove profile that cannot tear out
- can be extended individually
- impermeable against pressing water and stray gas
- practice oriented connection and different options to combine



Instructions for subsequent installation of a wall duct with the installation set

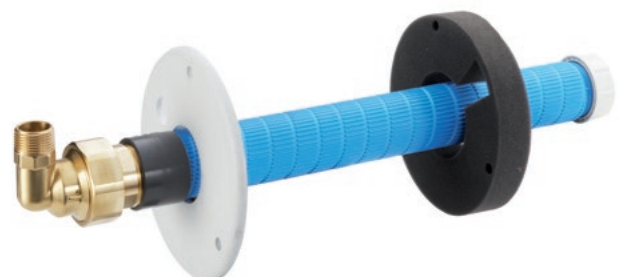


1. Remove union nut, slide ring and seal from the wall duct.
2. Push the flange onto the wall duct and firmly screw the union nut without slide ring and seal.
3. Put the wall duct with flange concentrically into the core hole or the breakthrough and mark the boreholes. (inside house).
4. Remove the flange with the wall duct and drill the fastening holes (Ø10 mm).
5. Insert the dowels, mount the wall duct with flange and cellular seals.
6. Put in the ventilation hose and seal the core hole around the wall duct (outside house).
7. Fill the sealing material into the borehole via the filling opening (Please respect the processing instructions of the manufacturer of the sealing material.)
8. Press the sealing plug into the filler hole.
9. After the sealing material is cured, the pipe can be pushed through the wall duct and the wall duct can be mounted with slide ring and seal.

Note:
The sealing between protecting pipe and brickwork should be made by suitable plastic material. Example: Tangit M3000 (expansion resin).

When retrofitting our wall ducts, please consider the following outer diameters of the wall ducts:

outer diameter of pipe or cable to be let through (mm)	outer diameter of wall duct (mm)	ideal installation set dimension (mm)
up to 26,9	40	-
up to 33,7	47	32
up to 43,0	57	40
up to 52,9	69	50
up to 64,5	83	63
up to 76,1	96	-



APPLICATION	D	● = Drinking water
	W	● = Water
	C	● = Cable

Overview

Image	Description	Page	Image	Description	Page
	Wall duct for continuous plastic pipe Model 9000 ● ●	6/7		Wall duct with connector, male thread (product group A1) Model 9100 ● ●	11
	Extension part 150 mm Model 9015 ● ●	8		Wall duct with connector, male thread (product group A3) Model 9800 ● ●	11
	Extension part 300 mm Model 9030 ● ●	8		Wall duct with elbow 90°, male thread (product group A3) Model 9830 ● ●	11
	Extension bushing Model 9040 ● ●	8		Wall duct with elbow 90°, female thread (product group A3) Model 9850 ● ●	11
	Reducing socket for wall duct model 9000 Model 9050 ● ●	9		Wall duct with connector, male thread (product group A1) protecting pipe made of steel Model 910 ● ●	12
	Reducing seal set for model 9090 Model 9051 ● ●	10		Brass gland fitting for protecting pipe made of steel Model 90 ● ●	12
	Forcing nut for wall duct model 9000 Model 90001 ● ●	9		Brass gland fitting for protecting pipe made of steel, with connector with pipe male thread (A1) Model 91 ● ●	12
	Connection set for plastic spiral hose 90905 Model 90904 ● ●	10		Installation set for wall duct model 9000 Model 909020 ● ●	13
	Gland fitting Model 9090 ● ●	10			
	Plastic spiral hose Model 90905 ● ●	10			
	Hose clips Model 90906 ● ●	10			



WALL DUCT
Model 9000

for all kinds of continuous water bearing pipes and for cables protecting pipe made of plastic
(standard length = 450 mm - more lengths on request)

outer diameter of wall duct (mm)	outer diameter of passing conduits (mm)	length (mm)	W	C	pkg. unit	EAN no. 4027848-
40	13 - 15	450	●	●	1	126736
40	16,6 - 18,9	450	●	●	1	126767
40	19 - 20,5	450	●	●	1	126514
40	21,6 - 22,5	450	●	●	1	126835
40	22,6 - 23,5	450	●	●	1	126842
40	23,6 - 25,5	200	●	●	1	167234
40	23,6 - 25,5	450	●	●	1	126521
40	27 - 29	450	●	●	1	126880
47	31 - 32,5	200	●	●	1	167333
47	31 - 32,5	400	●	●	1	167340
47	31 - 32,5	450	●	●	1	126538
47	31 - 32,5	500	●	●	1	167364
47	31 - 32,5	530	●	●	1	167371
47	31 - 32,5	600	●	●	1	167395
47	31 - 32,5	700	●	●	1	167418
47	31 - 32,5	750	●	●	1	167425
47	31 - 32,5	800	●	●	1	167432
47	31 - 32,5	1000	●	●	1	167463
47	32,6 - 33,7	450	●	●	1	126606
57	33,8 - 35	450	●	●	1	126934
57	38,6 - 40	200	●	●	1	167517
57	38,6 - 40	300	●	●	1	167531
57	38,6 - 40	400	●	●	1	167548
57	38,6 - 40	450	●	●	1	126545
57	38,6 - 40	500	●	●	1	182282
57	38,6 - 40	530	●	●	1	167593
57	38,6 - 40	600	●	●	1	167623
57	38,6 - 40	650	●	●	1	167647
57	38,6 - 40	700	●	●	1	167654
57	38,6 - 40	750	●	●	1	167661
57	38,6 - 40	800	●	●	1	167685
57	38,6 - 40	900	●	●	1	167692
57	38,6 - 40	1000	●	●	1	167708
57	38,6 - 40	2000	●	●	1	167722
57	40,1 - 41	450	●	●	1	126972
57	40,1 - 41	1500	●	●	1	249923
57	41,1 - 42	450	●	●	1	126989
57	42,1 - 43	450	●	●	1	126613
						...

APPLICATION	D	● = Drinking water
	W	● = Water
	C	● = Cable



WALL DUCT Model 9000

for all kinds of continuous water bearing pipes and for cables protecting pipe made of plastic
(standard length = 450 mm - more lengths on request)

outer diameter of wall duct (mm)	outer diameter of passing conduits (mm)	length (mm)	W	C	pkg. unit	EAN no. 4027848-
...						
69	46,6 - 49	450	●	●	1	127047
69	49,1 - 50	200	●	●	1	214587
69	49,1 - 50	450	●	●	1	126552
69	49,1 - 50	530	●	●	1	167784
69	49,1 - 50	600	●	●	1	167791
69	49,1 - 50	800	●	●	1	167838
69	49,1 - 50	1000	●	●	1	195046
69	50,1 - 50,5	450	●	●	1	127054
69	50,6 - 51,5	450	●	●	1	127092
69	51,6 - 52,9	450	●	●	1	126699
83	58,6 - 61	450	●	●	1	127122
83	61,1 - 63	200	●	●	1	167920
83	61,1 - 63	450	●	●	1	126569
83	61,1 - 63	530	●	●	1	167951
83	61,1 - 63	600	●	●	1	167975
83	61,1 - 63	750	●	●	1	168002
83	61,1 - 63	1000	●	●	1	168033
83	61,1 - 63	2000	●	●	1	190683
83	63,1 - 64,5	450	●	●	1	126705
83	63,1 - 64,5	1000	●	●	1	335671
96	73,6 - 76,1	200	●	●	1	248636
96	73,6 - 76,1	450	●	●	1	126576



EXTENSION PART
Model 9015

made of plastic, length: 150 mm

outer diameter of wall duct (mm)	outer diameter of passing conduits (mm)	W	C	pkg. unit	EAN no. 4027848-
40	up to 26,9	●	●	1	132362
47	up to 33,7	●	●	5	132379
57	up to 43,0	●	●	5	132386
69	up to 52,9	●	●	2	132393
83	up to 64,5	●	●	1	132409



EXTENSION PART
Model 9030

made of plastic, length: 300 mm

outer diameter of wall duct (mm)	outer diameter of passing conduits (mm)	W	C	pkg. unit	EAN no. 4027848-
40	up to 26,9	●	●	1	132416
47	up to 33,7	●	●	5	132423
57	up to 43,0	●	●	5	132430
69	up to 52,9	●	●	2	132447
83	up to 64,5	●	●	1	132454



EXTENSION BUSHING
Model 9040

made of plastic

outer diameter of wall duct (mm)	outer diameter of passing conduits (mm)	W	C	pkg. unit	EAN no. 4027848-
40	up to 26,9	●	●	1	132461
47	up to 33,7	●	●	5	132478
57	up to 43,0	●	●	5	132485
69	up to 52,9	●	●	5	132492
83	up to 64,5	●	●	1	132508

APPLICATION	D	● = Drinking water
	W	● = Water
	C	● = Cable



REDUCING SOCKET Model 9050

made of plastic
for wall duct model 9000

outer diameter of passing conduits (mm)	socket Ø	W	C	pkg. unit	EAN no. 4027848-
31 - 32,5	40	●	●	1	130979
38,6 - 40	50	●	●	1	130986



REDUCING SEAL SET Model 9051

from outer diameter 40 mm to 32 mm
consisting of seal and sliding ring

dimension (mm)	W	C	pkg. unit	EAN no. 4027848-
40 to 32	●	●	1	304523



FORCING NUT Model 90001

for wall duct model 9000
consisting of sliding ring, seal and forcing nut

outer diameter of passing conduits (mm)	W	C	pkg. unit	EAN no. 4027848-
23,6 - 25,5	●	●	1	207886
31 - 32,5	●	●	1	167319
38,6 - 40	●	●	1	182268
49,1 - 50	●	●	1	209408
61,1 - 63	●	●	1	167913



CONNECTING SET

Model 90904

for spiral hose model 90905
to create a flexible wall duct

consisting of: 2 gland fittings model 9090 and
2 hose clips made of stainless steel model 90906

inner diameter of required hose (mm)	outer diameter of passing conduits (mm)	W	C	pkg. unit		EAN no. 4027848-
40	31 - 32,5	●	●	1		266494
50	38,6 - 40	●	●	1		266500
60	49,1 - 50	●	●	1		266517
75	61,1 - 63	●	●	1		266524



GLAND FITTING

Model 9090

made of plastic, with hose nozzle

inner diameter of required hose (mm)	outer diameter of passing conduits (mm)	W	C	pkg. unit		EAN no. 4027848-
40	31 - 32,5	●	●	1		131020
50	38,6 - 40	●	●	1		131037
60	49,1 - 50	●	●	1		131044
75	61,1 - 63	●	●	1		131051



PLASTIC SPIRAL HOSE

Model 90905

50 m per roll

inner diameter of required hose (mm)	outer diameter of passing conduits (mm)	W	C	pkg. unit		EAN no. 4027848-
40	31 - 32,5	●	●	1		229765
50	38,6 - 40	●	●	1		214617
60	49,1 - 50	●	●	1		229772
75	61,1 - 63	●	●	1		229789



HOSE CLAMPS

Modell 90906

width: 9 mm

hose clamps made of stainless steel, screw made of zinc-coated steel. For spiral hose model 90905

inner diameter of required hose (mm)	for outer diameter (mm)	W	C	pkg. unit		EAN no. 4027848-
35	25 - 40			10		265473
40	35 - 50			10		265480
50	40 - 60			10		265497
60	50 - 70			10		265503

APPLICATION	D	● = Drinking water
	W	● = Water
	C	● = Cable



WALL DUCT

Model 9100

with connector with male thread of product group A1
protecting pipe made of plastic
standard length 450 mm

dimension of passing conduits (mm)	thread	D	W	pkg. unit	EAN no. 4027848-
25 x 2,3	3/4"	●	●	1	127245
32 x 2,9/3	1"	●	●	1	127283
40 x 3,6/3,7	1 1/4"	●	●	1	127320



WALL DUCT

Model 9800

with connector with male thread of product group A3
protecting pipe made of plastic
standard length 450 mm

dimension of passing conduits (mm)	thread	D	W	pkg. unit	EAN no. 4027848-
32	1"	●	●	1	128136
40	1 1/4"	●	●	1	128143
50	1 1/2"	●	●	1	128150



WALL DUCT

Model 9830

with elbow 90° with male thread of product group A3
protecting pipe made of plastic
standard length 450 mm

dimension of passing conduits (mm)	thread	D	W	pkg. unit	EAN no. 4027848-
32	1"	●	●	1	128259
40	1 1/4"	●	●	1	128266
50	1 1/2"	●	●	1	128273



WALL DUCT

Model 9850

with elbow 90° with female thread of product group A3
protecting pipe made of plastic
standard length 450 mm

dimension of passing conduits (mm)	thread	D	W	pkg. unit	EAN no. 4027848-
32	1"	●	●	1	128334



WALL DUCT
Model 910

with connector with male thread of product group A1
protecting pipe made of steel
standard length 450 mm

dimension of passing conduits (mm)	thread	D	W	pkg. unit	EAN no. 4027848-
32 x 2,9/3	1"	●	●	1	128655
40 x 3,6/3,7	1 1/4"	●	●	1	128709



BRASS GLAND FITTING
Model 90

for protecting pipe made of steel
for continuous plastic pipe

dimension of passing conduits (mm)	thread	D	W	pkg. unit	EAN no. 4027848-
32	1 1/2"	●	●	2	131082
40	2"	●	●	2	131099
50	2 1/2"	●	●	1	131105



BRASS CONNECTOR
Model 91

for protecting pipe made of steel
with connector with pipe male thread of product group A1

dimension of passing conduits (mm)	thread	D	W	pkg. unit	EAN no. 4027848-
32 x 2,9/3	1"	●	●	2	131341
40 x 3,6/3,7	1 1/4"	●	●	2	131402

APPLICATION	D	● = Drinking water
	W	● = Water
	C	● = Cable



INSTALLATION SET

Model 909020

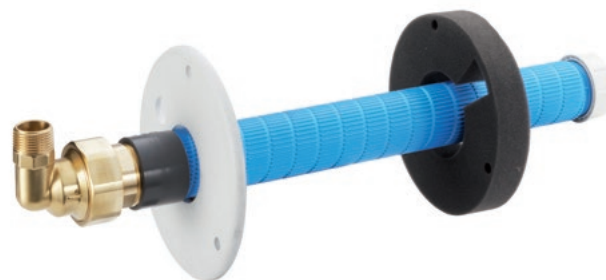
for wall duct model 9000, for later installation (e.g. in case of core hole bores) consisting of:

- 1 flange
- 1 cellular seal
- 3 screws with plain washer and pin
- 1 plastic plug for closing the feed opening
- 1 air vent hose

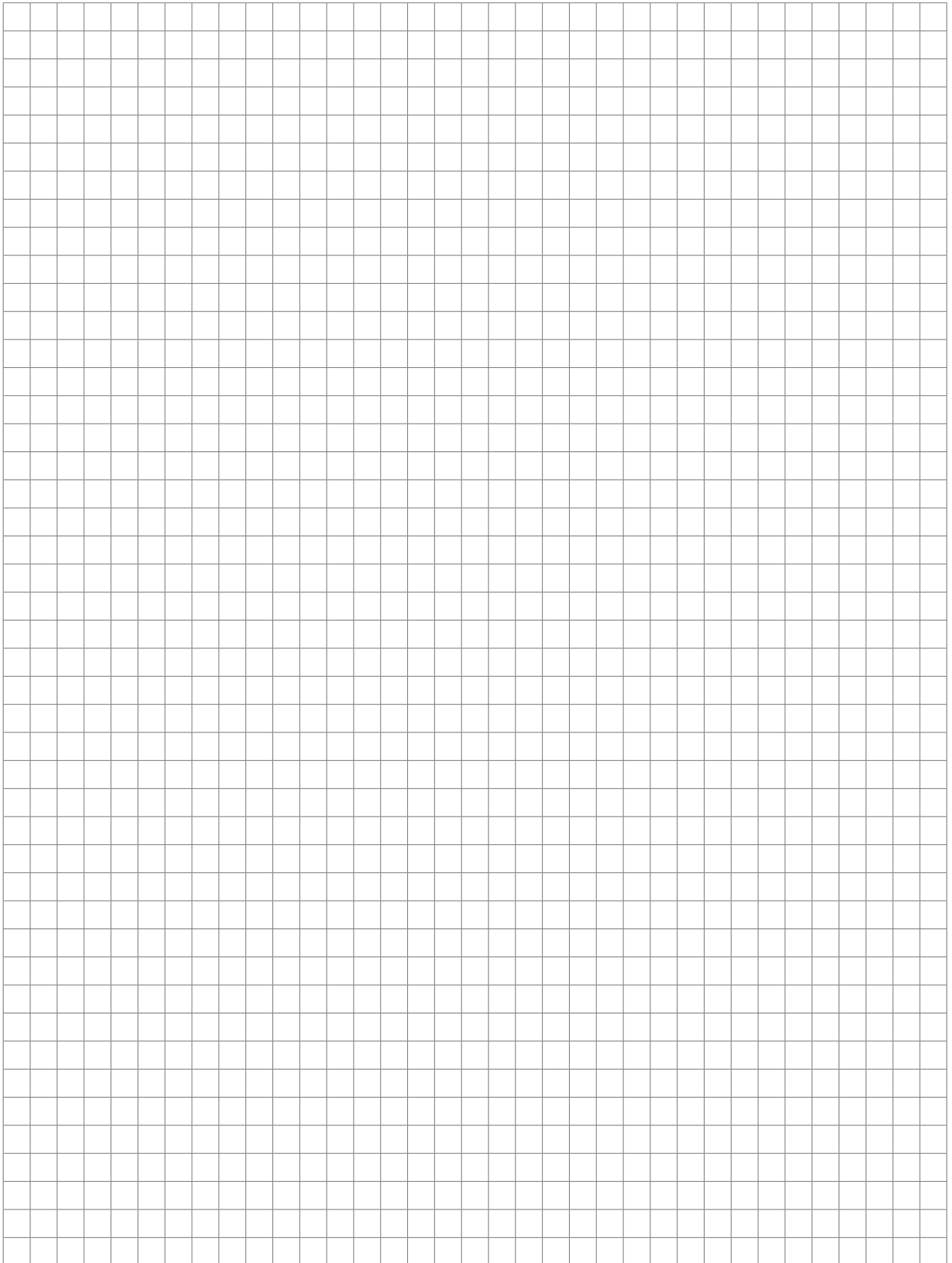
dimension (mm)	diameter of core hole bore (mm)	W	C	pkg. unit	EAN no. 4027848-
32	60	●	●	1	211111
40	70	●	●	1	211128
50	80	●	●	1	223930
63	90	●	●	1	223947

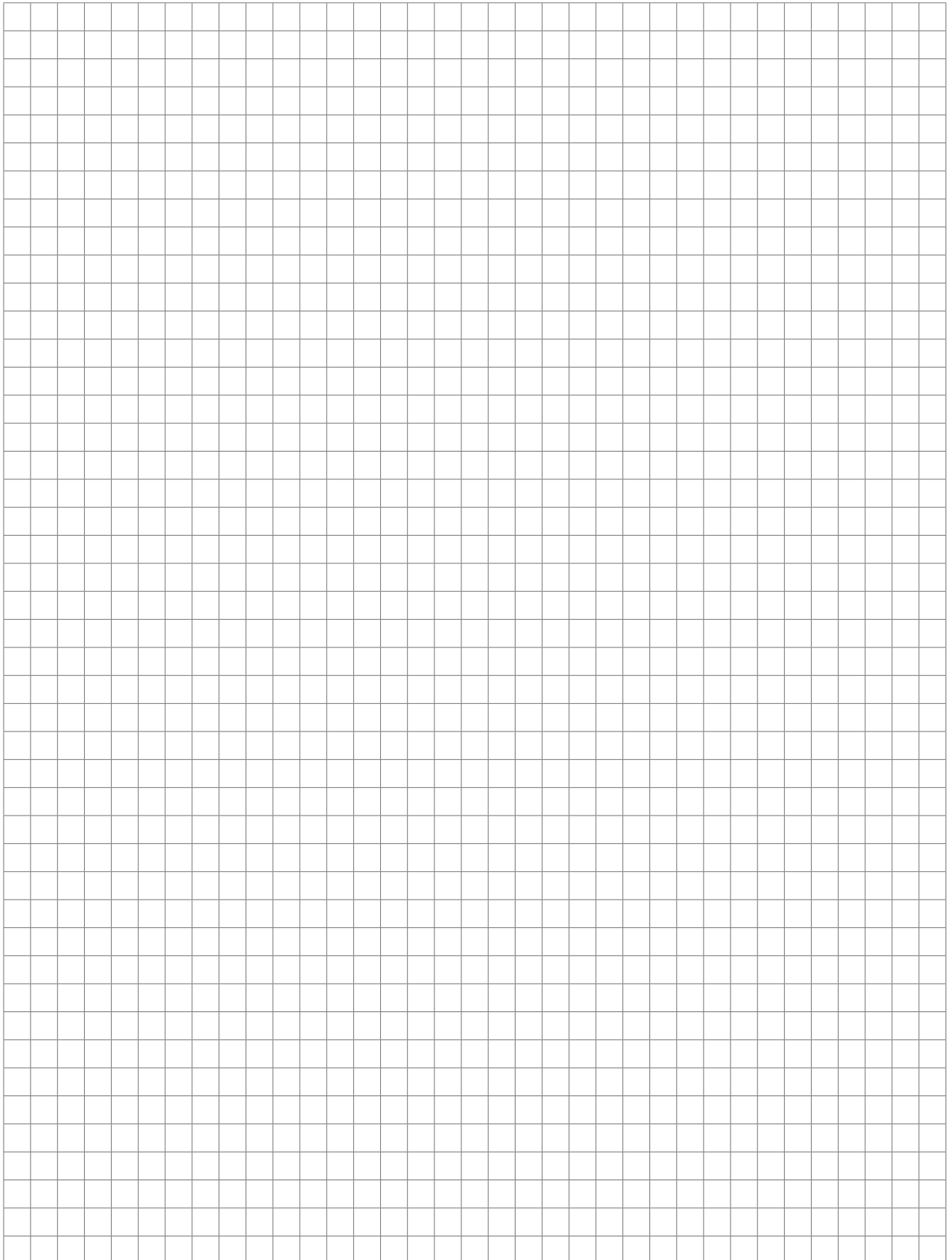
When retrofitting our wall ducts, please note the following outer diameters of the protecting pipes:

outer diameter of pipe or cable to be let through (mm)	outer diameter of wall duct (mm)	ideal installation set dimension (mm)
up to 26,9	40	-
up to 33,7	47	32
up to 43,0	57	40
up to 52,9	69	50
up to 64,5	83	63
up to 76,1	96	-



Notes







BEULCO® GmbH & Co. KG

Kölner Str. 92
D-57439 Attendorn

Postbox 120
D-57425 Attendorn

Phone +49 2722 695-0
Fax +49 2722 695-5240

info@beulco.de
www.beulco.de